



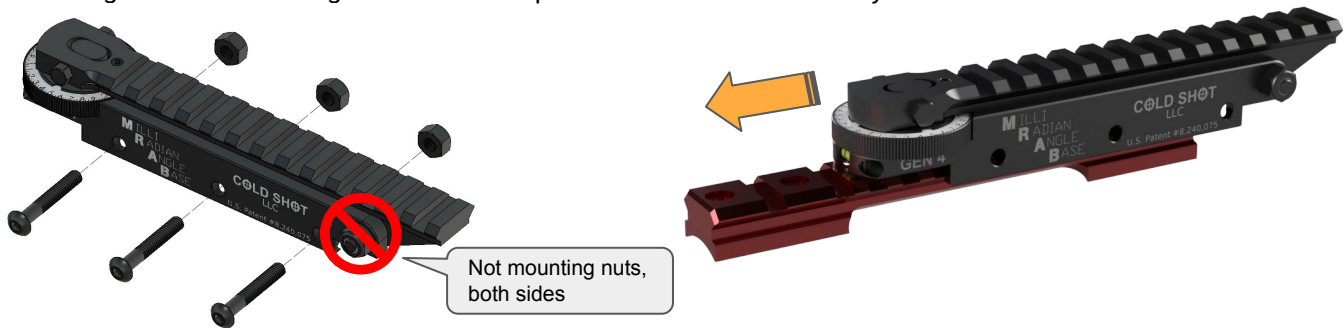
## COLD SHOT - MOAB/MRAB - GENERATION 4

**STEP 1: Make certain that the FIREARM IS EMPTY and the SAFETY IS ENGAGED.**

**NOTE: MOAB/MRAB 300M** Elevation will require additional modification, after step 7, to the Picatinny rail. See below for modification instructions.

**STEP 2:** Remove the 3 mounting rail bolts and nuts.

**STEP 3:** Slide the scope base onto the Picatinny Rail from one end and align the mounting holes to align with the spaces in the Picatinny Rail.



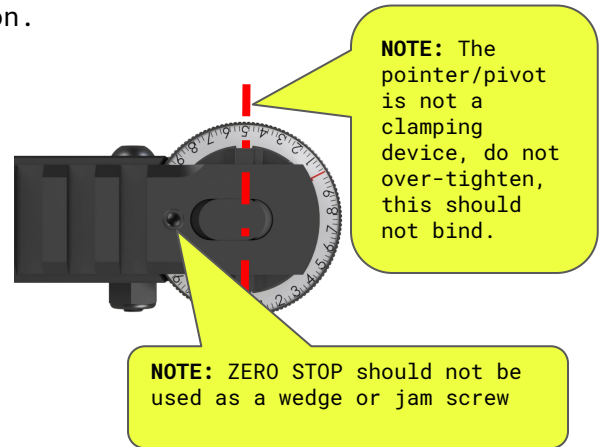
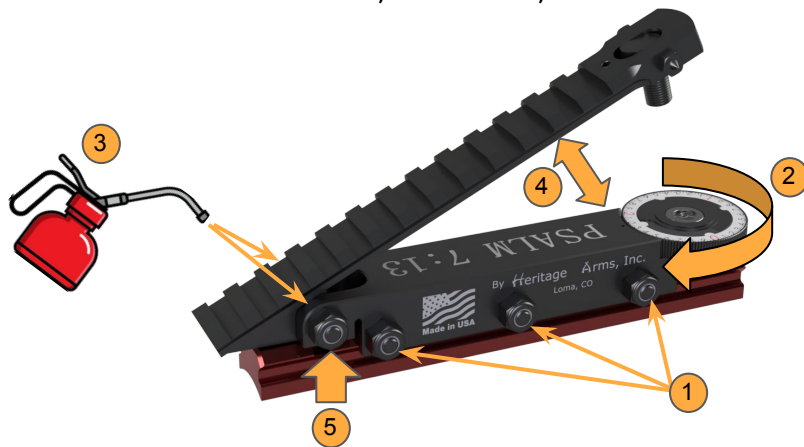
**STEP 4:** Install the 3 mounting rail bolts and nuts (1).

**STEP 5:** Unscrew the elevation screw by turning the dial counter-clockwise (2).

**STEP 6:** Lift the top rail until it is at the position below (4).

**STEP 7:** Tighten the pivot bolt enough so that the rail does not fall, but loose enough for it to move by hand (5). **NOTE:** The rail should not bend to move.

**STEP 8:** Lubricate the pivot pin (3). If you have a MOAB 300 Minute or MRAB 144 Milli-radian, See instructions, on PG. 2, for rail modification.



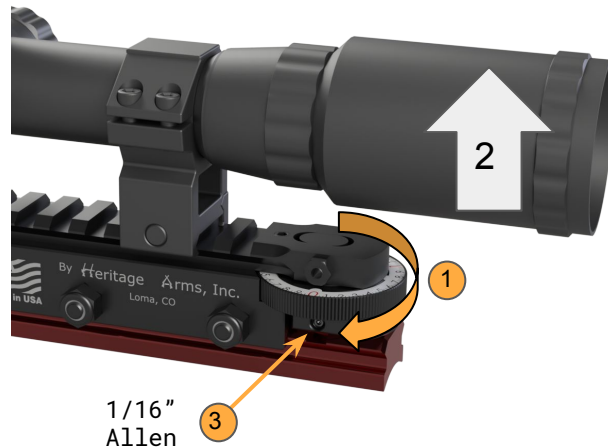
**STEP 9:** Install the scope rings and scope, torque to manufacturer's recommendation





## COLD SHOT - MOAB/MRAB - GENERATION 4

- STEP 10:** Adjust the wheel clockwise a few turns.
- STEP 11:** Gently lift up on the rear of the scope, check for vertical lash, there should be no movement.  
NOTE: If there is movement, make sure it is the MOAB/MRAB, not a loose scope Bell or improper fitting Picatinny base rail.
- STEP 12: If there is movement:**  
Turn the wheel to access the setscrew  
Loosen the setscrew(3) a few turns.
- STEP 13:** While the allen wrench is still in the allen screw, turn the dial clockwise to adjust the lash until there is no movement. Once the wheel is tight, turn counter-clockwise a slight amount. (Usually about 1MOA or .3 MIL)
- STEP 14:** Tighten the setscrew to lock the collar. NOTE: Over-tightening this set-screw can Damage the threads on the elevating wheel, preventing future adjustments.
- STEP 15:** If the dial is too tight or if there is still movement, repeat STEPS 12-14.



### MOAB/MRAB 300M/144M MODIFICATION

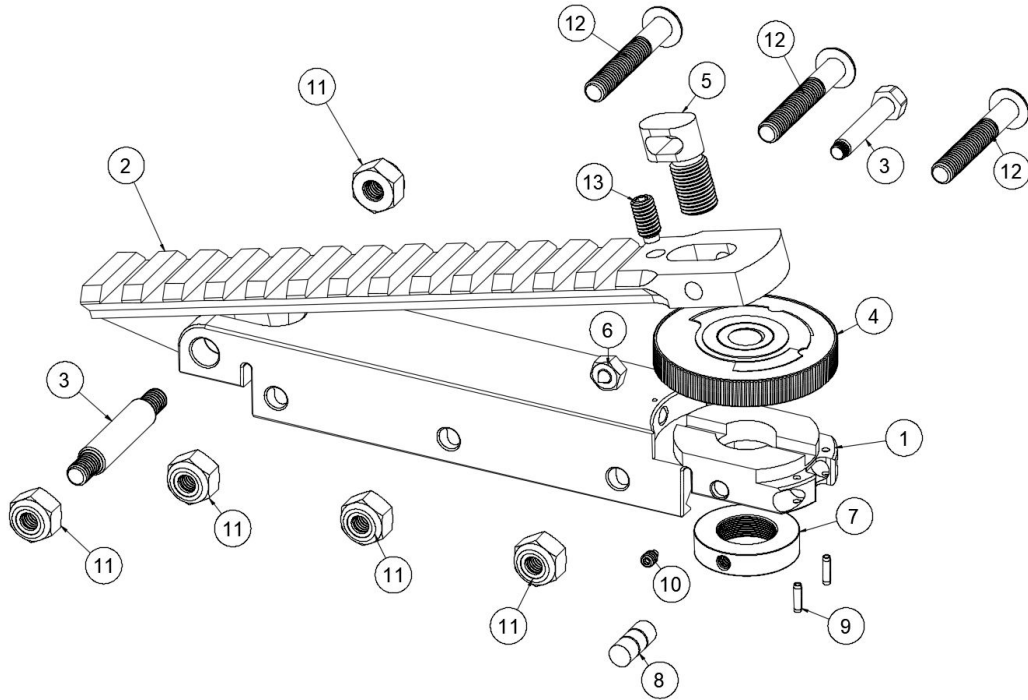
- STEP A:** Mark the location of the clearance hole, ensure that there is sufficient clearance to the mounting bolts on the rail (1).
- STEP B:** Remove the rail from the rifle.
- STEP C:** Fixture and drill (2) a  $\frac{3}{8}$ " (0.375") clearance hole,  $\frac{1}{4}$ " (0.250") minimum depth, through the rail on the location previously marked. An end mill can be used for a permanent mounted rail.
- RETURN TO STEP 3**





**COLD SHOT - MOAB/MRAB - GENERATION 4**

**PARTS LIST**



ITEM	QTY	PART NUMBER	DESCRIPTION
1	1	HA1109-G4	Scope Base
2	1	HA1107-G4	Top Rail Scope Mount - Standard
	-	HA1107L-G4	Top Rail Scope Mount - Long
3	1	HA1103-G4	Pivot Pin
4		HA1109-G4-MOAB	Dial - Minute of Angle Base
	-	HA1109-G4-MRAB	Dial - Milli Radian Angle Base
5	1	HA1105-G4-150M-MOAB	Elevation Screw - MOAB - 150 Minute
	-	HA1105-G4-300M-MOAB	Elevation Screw - MOAB - 150 Minute
	-	HA1105-G4-72M-MRAB	Elevation Screw - MRAB - 72 Mili
	-	HA1105-G4-144M-MRAB	Elevation Screw - MRAB - 144 Mili
6	1	HA1102	Pointer Nut
7	1	HA1110	Pivot/Pointer Bolt
8	1	HWD1000	Bubble Level
9	2	HWD1001	Roll Pin
10	1	HWD1002	Set Screw - Retaining Collar
11	5	HWD1003	Lock Nut
12	3	HWD1004	Socket Head Machine Screw
13	1	HWD1005	Set Screw - Top Rail Stop